

Typical Corneal Rigid Gas Permeable (RGP) Contact Lens

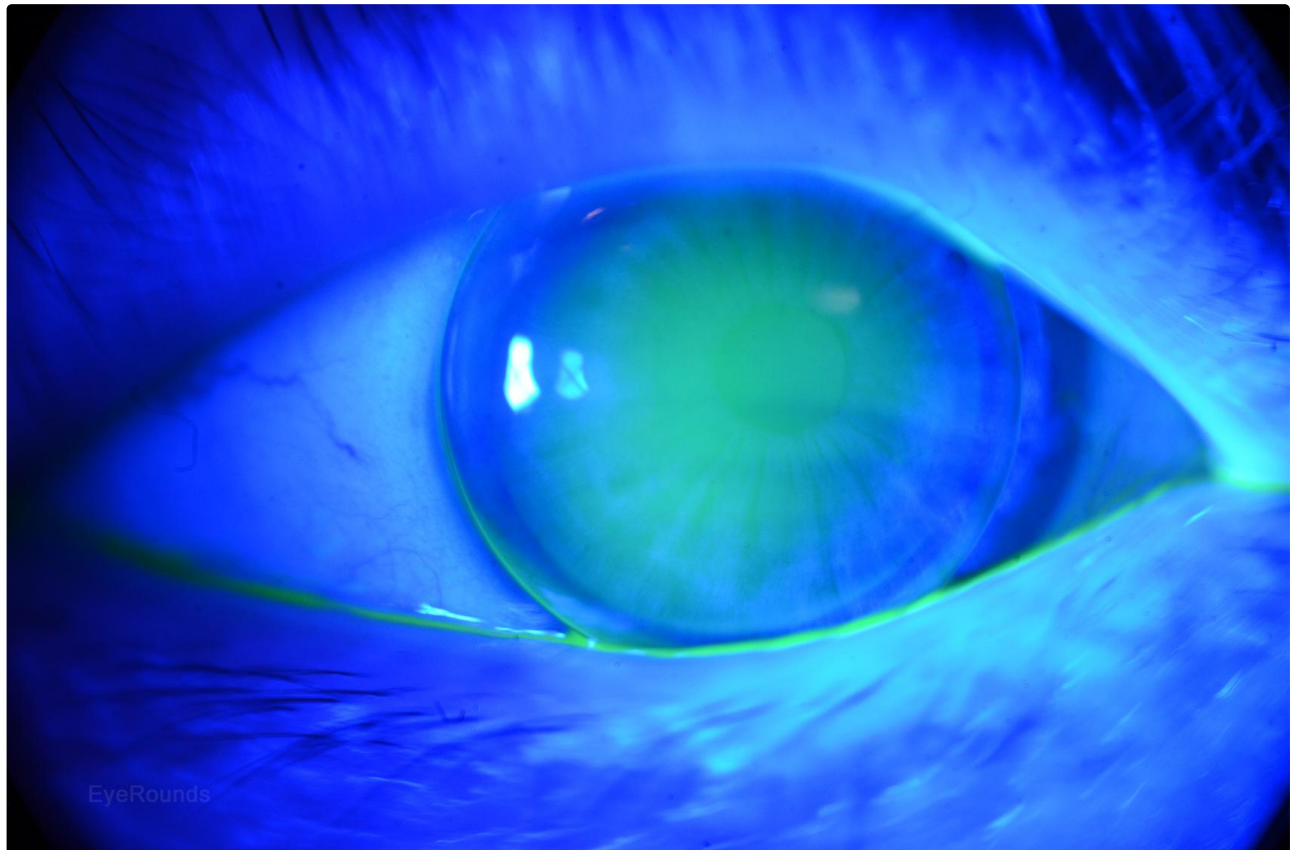
Category(ies): [Contact Lens](#)

Contributor: [Tressa Larson OD FAAO](#)

Photographer: Tressa Larson OD FAAO

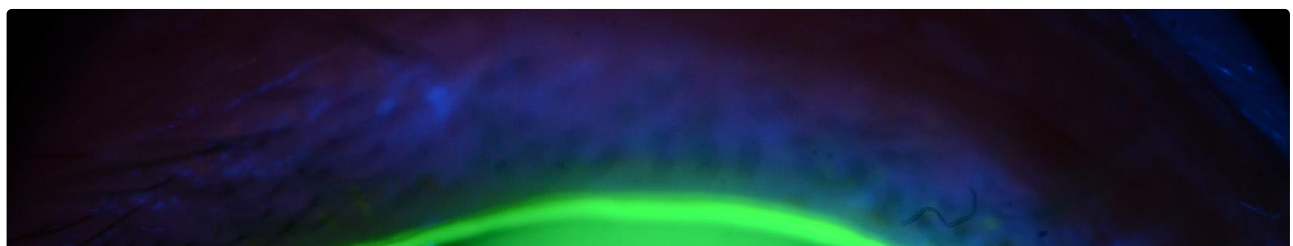


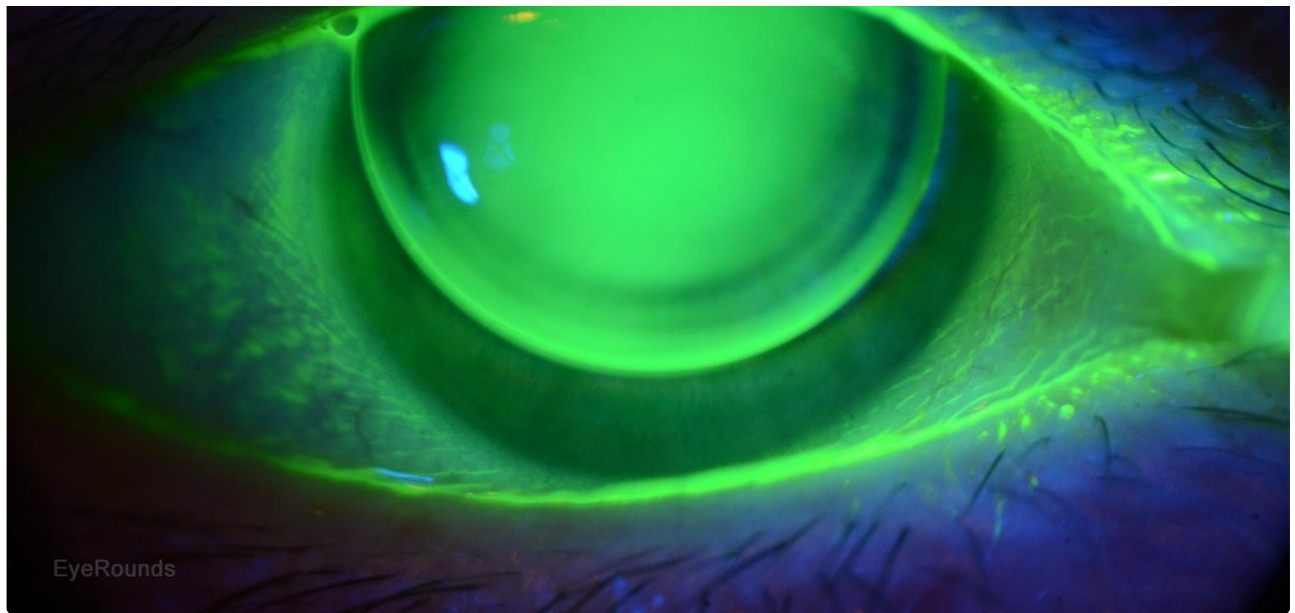
These two photos are of the same, very well fit, RGP. The first is taken using cobalt blue light with a Wratten yellow filter and fluorescein where the second is taken without the use of a Wratten filter. This lens is nicely lid-attached with a slightly superior position in primary gaze and an even aligned relationship to the cornea. The lens should move with the blink- the larger the lens, the less it will move, but a corneal lens should always have some movement.



[Enlarge](#)

[Download](#)





[Enlarge](#)

[Download](#)

Image Permissions:



Ophthalmic Atlas Images by EyeRounds.org, The University of Iowa are licensed under a [Creative Commons Attribution-NonCommercial-NoDerivs 3.0 Unported License](https://creativecommons.org/licenses/by-nc-nd/3.0/).

Address

University of Iowa
Roy J. and Lucille A. Carver College
of Medicine
Department of Ophthalmology and
Visual Sciences
200 Hawkins Drive
Iowa City, IA 52242

[Support Us](#)

Legal

Copyright © 2019 The University of
Iowa. All Rights Reserved
[Report an issue with this page](#)
[Web Privacy Policy](#) |
[Nondiscrimination Statement](#)

Related Links

[Cataract Surgery for Greenhorns](#)
[EyeTransillumination](#)
[Gonioscopy.org](#)
[Iowa Glaucoma Curriculum](#)
[Iowa Wet Lab](#)
[Patient Information](#)
[Stone Rounds](#)
[The Best Hits Bookshelf](#)

EyeRounds Social Media

Follow



Receive notification of new cases,
[sign up here](#)
[Contact Us](#)
[Submit a Suggestion](#)